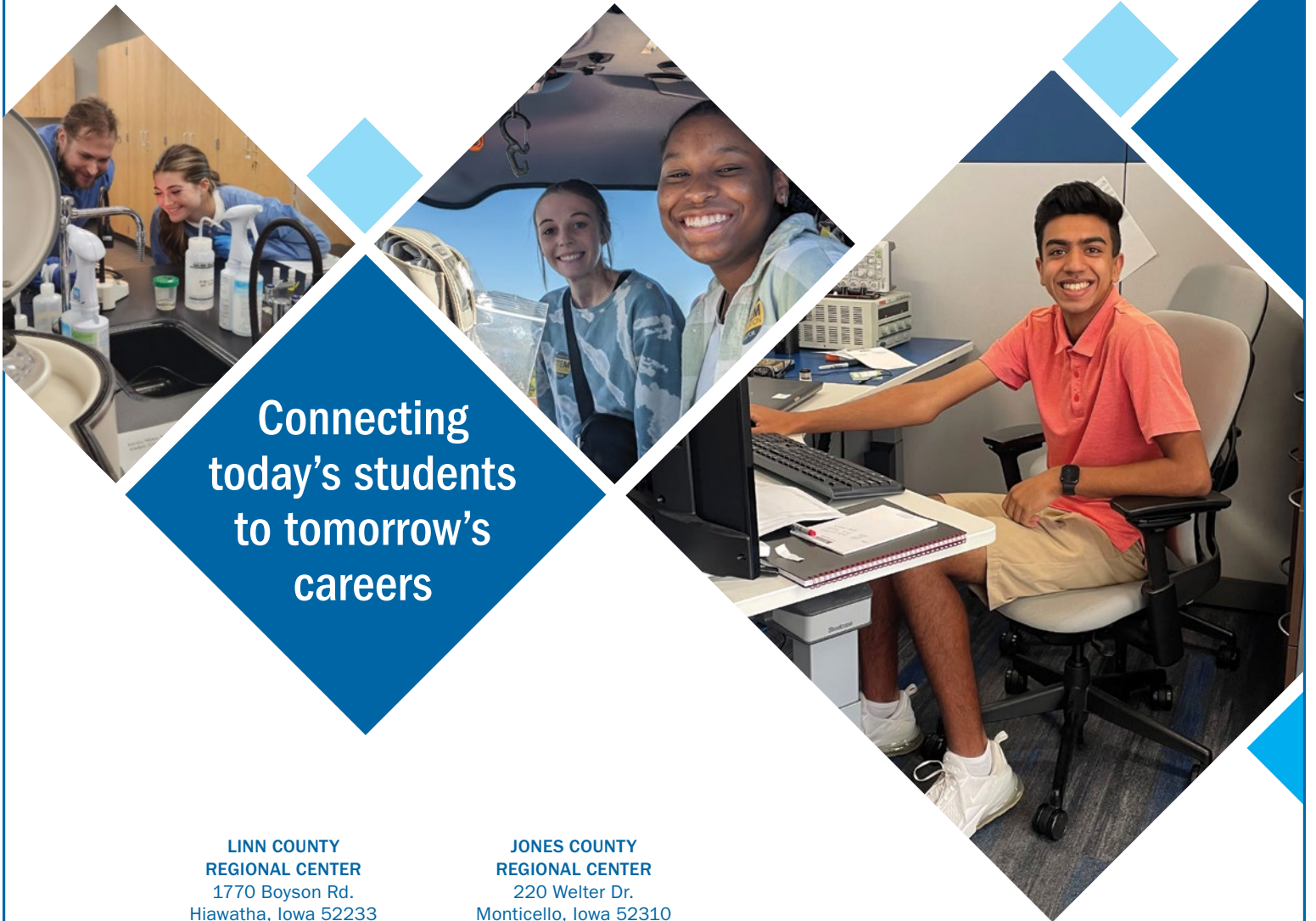


2023 – '24

ANNUAL REPORT

SERVING SCHOOLS, STUDENTS, EMPLOYERS, AND COMMUNITIES IN BENTON, CEDAR, IOWA, JOHNSON, JONES, LINN, AND WASHINGTON COUNTIES



Connecting
today's students
to tomorrow's
careers

LINN COUNTY
REGIONAL CENTER
1770 Boyson Rd.
Hiawatha, Iowa 52233
319-398-1040

KIRKWOOD REGIONAL CENTER
AT THE UNIVERSITY OF IOWA
2301 Oakdale Blvd.
Coralville, Iowa 52241

BENTON COUNTY CENTER
111 W. 3rd St.
Vinton, Iowa 52349

JONES COUNTY
REGIONAL CENTER
220 Welter Dr.
Monticello, Iowa 52310

WASHINGTON COUNTY
REGIONAL CENTER
2192 Lexington Blvd.
Washington, Iowa 52353

IOWA COUNTY CENTER
200 West St.
Williamsburg, Iowa 52361

Kirkwood
WORKPLACE LEARNING
CONNECTION

CONNECTING TODAY'S STUDENTS TO TOMORROW'S CAREERS

Workplace Learning Connection (WLC) connects middle and high school students and educators in the region to regional businesses through career awareness, career exploration, and work-based learning opportunities!

Connect to Your Future Workforce

WLC work-based learning services inform, prepare, and better align local students to local careers! Participating in WLC **Career Events, Job Shadows, Internships, and Educator Professional Development** provides business partners an opportunity to:

- Develop relationships with potential future employees
- Increase student awareness of career opportunities within their business and industry
- Enhance their business's reputation within the community
- Make a difference in the lives of our students

Students Get the Opportunity To:

DISCOVER

- See firsthand what a job is really like
- Get questions answered by career professionals
- Learn what essential skills, training, and education is needed

EXPLORE

- Satisfy their curiosity about a career
- Uncover their likes and dislikes

GET AHEAD

- Add experience that helps them stand out
- Learn what they can do now to jump-start their career
- Save time and money

CONNECT

- Meet local professionals and build their network
- Explore regional industries and career opportunities

VENTURE OUT

- Take their learning beyond the classroom
- Have fun while enjoying new experiences



▶ 2023 – '24 AT A GLANCE

Thank you to all our contributors, supporters, and volunteers!

FY24 BY THE NUMBERS



Workplace Learning Connection uses a diverse funding model that allows all partners to sustain their participation in an equitable manner. Whether a partner's interest is student career development, future workforce development, or regional economic development, all funds provide age-appropriate career awareness and exploration services matching the mission of WLC and our partners.

Funding the Connections

2023 – '24 Revenue Sources

Kirkwood Community College (General Fund)	\$50,000.00	6%
State and Federal Grants (Kirkwood: Perkins, WTED)	\$365,099.00	45%
Grant Wood Area Education Agency	\$45,000	6%
K-12 School District Fees for Services	\$249,277.00	31%
Contributions, County Supervisors, Local Grants	\$105,689.00	13%
Total	\$815,065.00	100%

WLC Financial Contributors

Boards of Supervisors:

- Benton County Board of Supervisors
- Cedar County Board of Supervisors
- Iowa County Board of Supervisors
- Johnson County Board of Supervisors
- Jones County Board of Supervisors
- Washington County Board of Supervisors

Individual Contributors:

- Anonymous
- Kristine Bullock
- Meghan Johnson
- Laura Miner
- Cheryl Valenta

Employer Contributions:

- BAE Systems
- Collins Aerospace
- Community Foundation of Johnson County
- Greater Cedar Rapids Community Foundation
- GreenState Credit Union
- Iowa City Press-Citizen (in-kind)

It is the policy of Kirkwood Community College not to discriminate in its programs, activities, or employment on the basis of race, color, national origin, sex, disability, age, sexual orientation, gender identity, creed, religion, and actual or potential family, parental or marital status. If you have questions or complaints related to compliance with this policy, please contact the Vice President, Human Resources and Institutional Effectiveness, 6301 Kirkwood Blvd. SW, Cedar Rapids, IA 52404, 319-398-5572, equity@kirkwood.edu, or the Director of the Office for Civil Rights U.S. Department of Education, John C. Kluczynski Federal Building, 230 S. Dearborn Street, 37th Floor, Chicago, IL 60604-7204, Telephone: (312) 730-1560 Facsimile: (312) 730-1576, TDD 800-877-8339 Email: OCR.Chicago@ed.gov.



BENTON COUNTY

7 Schools

Belle Plaine Community School District

- Belle Plaine High School
- Belle Plaine Middle School

Benton Community School District

- Benton Community High School
- Benton Community Middle School

Vinton-Shellsburg Community School District

- Vinton-Shellsburg High School
- Vinton-Shellsburg Middle School

Vinton-Shellsburg and Benton Community Homeschool Assistance Program

Business Hosts:

Atkins Elementary School
BASF

Belle Plaine Parks and Rec Dept.

Belle Plaine Police Department

Belle Plaine Specialty Care

Benton Community High School

Benton Community Middle School

Benton County Conservation

Benton County Sheriff Department

BoWood Company

Central Lutheran School

City of Vinton - VMEU

Clickstop, Inc.

Department of Health and Human Services

Edward's Plumbing, Heating, Air Conditioning

Farmers Savings Bank & Trust - Vinton

Frontier Co-Op - Norway

Horst Physical Therapy

Ideal Industries

Iowa Land Management

Iowa Mold & Engineering Inc.

Iowa State University Extension and Outreach -

Benton County

K&W Electric

Keystone Communications

Keystone Elementary School

Keystone Nursing Care Center, Inc

Kirkwood Community College - Benton County

Center

Koop's Sales and Service

Linn County Co-Op - Newhall

Longfellow Elementary - Belle Plaine

Main Street Bakery and Cafe

Manatt's Incorporated - Belle Plaine

MidWestOne Bank- Belle Plaine

New Beginnings Salon and Spa

North Benton Ambulance

North Tama/Keystone Veterinary Clinic -

Keystone

P&K Midwest - Keystone

Red Wheel Fundraising

Thomas Company

Thys Auto Group

Tilford Elementary School - Vinton

Titan Machinery - Blairstown

US Marine Corps - Prairie du Chien

Vinton Family Dental

Vinton Newspapers/Vinton Livewire

Vinton Police Department

Vinton Public Library

Vinton Unlimited

Vinton-Shellsburg Community School District

Vinton-Shellsburg Middle School

Virginia Gay Hospital

Virginia Gay Rehab Services

Wilson-Hite Insurance

Number of Benton County Student Participants:

TOTAL =

1,592

Benton County Student Career Exploration Experiences



1,397

Events: Mock Interviews, Financial Literacy Fairs, Speaker Days, Worksite Exploratory Events, STEAM Institute, Career Fairs, etc.



35

Internships



160

Job Shadows



“My job shadow helped me pin down the types of fields I could go into and helped me choose what to go to college for, and what classes I need in order to graduate from college.”

– Nathan Pyle, student - Belle Plaine High School

“Our collaboration with Workplace Learning Connection and Vinton-Shellsburg High School, creating an enhanced internship experience, was a great experience all the way around. We loved the opportunity to engage and connect with the future workforce. We enjoyed being able to be a part of these students' career exploration. It is a win-win experience. They gained some takeaway skills from the time they spent with us and we got some great production work. It is sad to see these students go, but it is really neat to see them grow.”

– Kayleen Schott, Controller - Ideal Industries

“The Vinton-Shellsburg Community School District is thrilled with the positive impact that WLC's career exploration programs have had on our students. Connecting them with job shadows, internships, and exploration opportunities such as a local career fair. WLC is empowering students to explore their interests and gain valuable real-world experience while fostering a strong school-to-workforce pipeline with community partners to best prepare students for success.”

– Aric Chvala, High School Facilitator – Vinton-Shellsburg High School



▶ CEDAR COUNTY

6 Schools

North Cedar Community School District

- North Cedar High School
- North Cedar Middle School

Tipton Community School District

- Tipton High School
- Tipton Middle School

West Branch Community School District

- West Branch High School
- West Branch Middle School

Business Hosts:

Albaugh PHC Inc
CDS Global
Cedar County Conservation
Cedar County Co-Op, Tipton
Cedar County Co-Op, West Branch
Cedar County Emergency Management
Cedar County Fairgrounds
Cedar County Public Health
Cedar County Secondary Roads
Cedar Manor Nursing Home
Cedar Poly Recycling LLC
Cedar Ridge Dental
Clarence Main Street Office
Clarence Senior Living
Cummins Manufacturing, Inc.
Iowa State University Extension and Outreach - Cedar County
LattaHarris LLP - Tipton
Local 25 Plumbers & Pipefitters JATC
Lowden Plumbing & Heating
Mechanicsville Specialty Care
Miracle-Ear Hearing Aid Center - Tipton
North Cedar Junior/Senior High School

P&K Midwest - Lowden
Prairie Hills at Tipton
Progressive Rehab. Assoc., LLC - Tipton
River Valley Cooperative
Roth Electric
Schroeder and Associates
State Farm Insurance - Tipton
Tipton Chamber of Commerce/Economic Development Office
Tipton Elementary School
Tipton High School
Tipton Police Department
Tipton Veterinary Service
Trends and Traditions
TSF Structures, Inc. - Tipton Production Facility
UnityPoint Clinic Family Medicine - Tipton
West Branch Animal Clinic
West Branch Community Development Group
West Branch Times
Wilton Community High School
Wilton Retirement Community



“The value of this job shadow was that it helped me learn if I wanted to pursue a career in this field and it helped me get an idea of what college is going to be like and how I should prepare for it. I liked how all the students and teachers there gave their own experience with Cybersecurity and Networking and how they chose that career path.”

– Owen Boldt, student - Tipton High School

“We have had the opportunity to work with numerous high school interns and we have been very impressed at the level of preparedness these young adults have when they arrive on day one. We value the opportunity to show these students what our career field looks like and how best to prepare for entering this industry. We enjoy the energy and enthusiasm of the participants and seeing them progress in their understanding of this career field.”

– Matt McCall, Owner – Matt McCall Insurance Agency Inc, State Farm Insurance

“Students don’t understand all the opportunities available in the trades. Career events like the tours put on by Workplace Learning Connection help plant the seed and open their eyes to potential career paths. It is not uncommon for me to have students come up to me after events and say they didn’t realize that was a possible career, and that they are interested in learning more. It is my job to give students a base of knowledge, and then my hope is they will eventually go to Kirkwood or another trade school if they are interested.”

– Randy Roberts, educator – West Branch High School

Number of Cedar County Student Participants:

TOTAL =

1,529

Cedar County Student Career Exploration Experiences



1,457

Events: Mock Interviews, Financial Literacy Fairs, Speaker Days, Worksite Exploratory Events, STEAM Institute, Career Fairs, etc.



14

Internships



58

Job Shadows



IOWA COUNTY

4 Schools

English Valleys Community School District
• English Valleys Jr/Sr High School

H-L-V Community School District
• H-L-V Junior-Senior High School

Iowa Valley Community School District
• Iowa Valley Jr/Sr High School

Williamsburg Community School District
• Williamsburg Jr-Sr High School

Business Hosts:

Ackerman Plumbing - Williamsburg
Amana Elementary
Amana Farms - Methane Digester
Amana Heritage Museum
Amana Society, Inc. - Main Office
Bayer Crop Sciences - Williamsburg
Belland Plumbing & Heating
Brian Miller Excavating, LLC
Colonial Manor of Amana
Compass Memorial Healthcare - Marengo
Compass Memorial Healthcare - Marengo Family Medical Clinic
Don Hummer Trucking - Homestead
Edward Jones Investment
Elite Sports
Family Dentistry - Victor
Farm and Family Veterinary Clinic - Victor
Fireside Winery
Grinnell State Bank - Marengo
Heitmann Insurance - Relion
Highland Ridge Senior Living Community
HLV High School
Impressionz Salon & Spa
Iowa County Ambulance Services - Marengo
Iowa County Conservation Board
Iowa County Sheriff's Office
Iowa County USDA Farm Service Agency
Iowa Elite Marketing Group
Iowa State University Extension and Outreach - Iowa County
Iowa Valley Elementary
Iowa Valley Resource Conservation & Development

J&S Farm Supply
Jensen Construction
Just Automotive
Keystone Savings Bank - Marengo
Kinze Manufacturing, Inc.
Kirkwood Community College - Iowa County Center
Magna Body & Chassis - Victor Manufacturing
Magna International - Williamsburg Manufacturing
Manatt's Incorporated - Brooklyn
Marengo Police Department
Mary Welsh Elementary - Williamsburg
Mercy Family Medicine - Williamsburg
Murphy Electrical Services, LLC
Navigation Play
Progressive Rehabilitation Associates, LLC - Williamsburg
Realtime Writing- Court Reporting/TV Captioning
Safe Haven of Iowa County
The Back Porch Flowers and Gifts
The Belland Team
The Gathering Barn
Thomas Company
Veterinary Medical Center
Wallace Bookkeeping Services
Whirlpool Corporation
Williamsburg Community Child Care Center
Williamsburg Dental Health Clinic
Williamsburg Police Department
Williamsburg Recreation Department

Number of Iowa County Student Participants:

TOTAL =

1,484

Iowa County Student Career Exploration Experiences



1,239

Events: Mock Interviews, Financial Literacy Fairs, Speaker Days, Worksite Exploratory Events, STEAM Institute, Career Fairs, etc.



25

Internships



220

Job Shadows



"My job shadow was a great experience, and I would recommend a job shadow to any classmate unsure of their future plans. I learned many different things at this job shadow like how to test to see what blood type you are, what machines do what, how to look for abnormalities in samples, how different diseases affect what data you can see from your blood, etc. It was a very hands-on learning experience. I liked how helpful everyone was, and they were all open to teaching me things. They told me about everything I would need to know including what schooling I would need, what schools are good options, the difference between going to a four-year or two-year program, the demand for workers in the field, the average starting wage, how much I could make if I were to be a traveling med tech, and so many other very helpful things.

- Haley Koenighain, student - Williamsburg High School

"Hosting a high school student for a job shadow reminded me of all the reasons I love my career field; to see the excitement in their eyes learning new things, their curiosity, and passion for a new topic that I get to do every day is very refreshing! I'm glad I could give some insight on what a job in my field entails!"

- Kendall Watson, Events and Social Media Coordinator - Fireside Winery



▶ JOHNSON COUNTY

16 Schools

Clear Creek Amana Community School District

- Clear Creek Amana High School
- Clear Creek Amana Middle School

Iowa City Community School District

- Elizabeth Tate High School
- Iowa City High School
- Iowa City Home School Assistance Program
- Liberty High School
- West Senior High School
- North Central Junior High School
- Northwest Junior High School
- Southeast Junior High School

Lone Tree Community School District

- Lone Tree High School
- Lone Tree Middle School

Regina Catholic Education Center

- Regina Jr./Sr. High School

Solon Community School District

- Solon High School
- Solon Middle School

Business Hosts:

1215 Design LLC

Ability Physical Therapy - Solon
Above & Beyond Heating and Air
Conditioning, LLC

ACT

Alexander Elementary School

Axis Vision Care - Tiffin

Barrett's Quality Eats

Bella Vita Chiropractic

Best Friends Veterinary Care

Big Grove Brewery

Billion Auto Collision

Billion Chevrolet Buick GMC

Bio::Neos, Inc.

Bluebird Cafe Solon

Bowman Chiropractic Associates, PC of Iowa City

Bridge Community Bank - Solon

Bright Eyes and Bushy Tails Veterinary Hospital

Brosh Chapel

C & R Pork Farms

Carew Chiropractic

Carolina Espinoza Insurance & Financial
Services, Inc.

Center for Worker Justice of Eastern Iowa
Centro, Inc.

Chalupsky Landscaping & Nursery

ChildServe

City of Iowa City Cable TV Office

City of Iowa City, Neighborhood and Development
Services

City of Iowa City, Parks & Recreation

City of Solon

CIVCO Medical Solutions-Coralville

Clear Creek Amana High School

Clear Creek Amana Middle School

Clear Creek Elementary School

Cobra Electric, LLC

Conlon Construction

Coralville Center for the Performing Arts

Coralville Fire Department

Coralville Police Department

Corcentric

Crowded Closet

Dell Technologies

DNR - Iowa Geological Survey

DWELL Home Furnishings & Interior Design

EDGE Realty Group EIC

Eide Bailly

Fareway Stores, Inc. - Tiffin

FilmScene

First Interstate Bank

FJ Krob & Co.

Friends of the Animal Center Foundation

GasLight Village

Gay and Ciha Funeral and Cremation Service

Gentle Family Dentists

Goodwill of the Heartland-Coralville

Grace Community Church

Grand Living at Bridgewater

Grant Wood Elementary School - ICCSD

Greater Iowa City

Greater Iowa City Area Home Builders
Association

GreenState Credit Union - Coralville

GreenState Credit Union - Financial Center

GreenState Credit Union - North Liberty

Grow: Johnson County

Hanger Clinic: Prosthetics & Orthotics Solutions

Hart Family Dentistry

Hart-Frederick Consultants PC.

Heartland Express

Hills Bank and Trust - Coralville

Hills Bank and Trust - Hills

Hyatt Regency Coralville

Hy-Vee - 1st Avenue

Integrated DNA Technologies

Iowa - Legislature - House

Iowa Army National Guard - Iowa City

Iowa City Animal Care and Adoption Center

Iowa City Community School District

Iowa City Press Citizen

Iowa City Public Library

Iowa Flood Center

Iowa Heartlanders Hockey

Iowa State University Extension and Outreach -
Johnson County

Iowa State University Extension and Outreach -
Story County

Jet Air, Inc.

Johnson County Affordable Housing Coalition

Johnson County Ambulance Service

Johnson County Attorney's Office

Johnson County Conservation

Johnson County Public Defender's Office

Johnson County Sheriff's Department

Joint Emergency Communication Center - JECC

Junge Ford North Liberty

Keller Williams Legacy Group - Coralville

Kennedy, Gelner, Cronk and Waterman, PC

Kirkwood Academy Johnson County

Kirkwood Community College - Career Services

Kirkwood Regional Center at the University of
Iowa

LattaHarris LLP - Iowa City

Lenger Design Studio

Lepic-Kroeger Realtors

Lone Tree Elementary

Love-A-Lot Early Childhood Center

Medin Family Dental

Melrose Meadows

Menards

Mercy Family Medicine Coralville

Mercy Iowa City

MercyCare North Liberty

MidAmerican Energy Company

MidWestOne Bank

MidWestOne-Coralville

Miracles in Motion

MMS Consultants Inc.

Modus Engineering

Mortenson Construction

Muscatine Power and Water

Number of Johnson County Student Participants:

TOTAL =

8,744

Johnson County Student Career
Exploration Experiences



7,573

Events: Mock Interviews, Financial Literacy
Fairs, Speaker Days, Worksite Exploratory
Events, STEAM Institute, Career Fairs, etc.



140

Internships



1,031

Job Shadows



▶ JOHNSON COUNTY (CONTINUED)

Navara Insurance
Neumann Monson Architects
New Pioneer Co-op - North Liberty Bakery
Newport Fab & Machine
North Central Junior High
North Dodge Athletic Club
North Liberty Library
North Liberty Police Department
NuCara Pharmacy
Oaknoll Retirement Residence
Old Capitol Kiwanis
PCI Academy
Pearson - Iowa City
Performance Therapies - Coralville
Pet Health Center of Tiffin
Pinseekers
Prairie Trail Sports - The Palestra Sports Complex
ProCircular
Procter & Gamble
Progressive Rehabilitation CoralWest
Progressive Rehabilitation Mercy Medical Plaza
Progressive Rehabilitation Tiffin
PRVN Consultants, Inc.
PSC Distribution
Regina Elementary School
Regina Preschool
Renee's Ceramic Cafe
Resto-Rides LLC
Savant Wealth Management
Sensory Kids
Shive-Hattery, Inc - Iowa City
Shoemaker & Haaland Professional Engineers - Coralville
Solon High School
Solon State Bank - Tiffin
South Slope Cooperative
Stew and Lenore Hansen Football Performance Center
Storyline Multimedia
Stride Autism Centers
Studio H2O
Stutsmans Inc.
Sudden Impact Business Solutions

Sueppel's Siding & Remodeling
Summer of the Arts
Sun & Fun Motorsports
Systems Unlimited, Inc. - Iowa City
Target - Coralville
Team Iowa Physical Therapy
The ARC of Southeast Iowa
The Celebration Farm, LLC
The Eat Shop
The Englert Theatre
The Family Dental Center
The Housing Fellowship
The S/L/A/M Collaborative
Tiffin Elementary
Towler Photography
Towncrest Pharmacy
Two Rivers Bank
University of Iowa Hospitals & Clinics
Carver College of Medicine
Department of Internal Medicine
Department of Neurology
Department of Neuroscience & Pharmacology
Department of Psychiatry
Francois M. Abboud Cardiovascular Research Center
University of Iowa Children's Hospital
University of Iowa Health Care
University of Iowa Radiation Sciences
University of Iowa
Admissions
Army ROTC
Athletic Department Sports Marketing
College of Dentistry
College of Education
College of Engineering
College of Liberal Arts & Sciences - Anthropology
College of Liberal Arts & Sciences - Psychological and Brain Sciences
College of Liberal Arts Sciences - Paleontology Repository
College of Pharmacy
Department of Anatomy and Cell Biology

Department of Biology (Evolution Group)
Department of Biomedical Engineering
Department of Chemistry
Department of Civil & Environmental Engineering
Department of Mathematics
Department of Mechanical Engineering
Department of Performing Arts
Department of Physics & Astronomy Outreach Program
Department of Physics and Astronomy
Department of Computer Science
Driving Safety Research Institute
Human Resources
Hydroscience & Engineering
Information Technology Services
ITS Research Services
Office of the State Archaeologist
Pentacrest Museums
Pomerantz Career Center
School of Music
Stanley Museum of Art
The Daily Iowan
Tippie College of Business
University Housing and Dining
Special Collections and Archives
Transportation
Urban Acres Real Estate
US Marine Officer Selection-Iowa City
Van Allen Elementary
Veteran's Administration Medical Center
VOC Associates
Watts Group Realty
Wealth Enhancement Group
Weber Elementary
West Music Company - Coralville
Woodruff Construction
Woofables Gourmet Dog Bakery



"My eyes were opened to all the different professions available in a hospital. I liked being in a clinical setting for the first time and am grateful that I got to learn more about Radiology."

- Claire Hahn, Iowa City West High School – WLC summer 2023 intern at Veteran's Administration Medical Center

"We believe it is imperative that we do everything we can to help build our local community and future workforce. Because of this, it is a no-brainer for us to participate with WLC as they provide opportunities to students that help them explore careers and learn about industries. WLC makes it super easy to give back to our community by spending our time with students and trying to ignite a spark in them just like the ones that got so many of us into this industry in the first place!"

- Steven Davis, Owner - Bio:Neos, Inc.

"I love seeing our engineers engage the students in the activities. And I love the connections we can make with students. At a recent Iowa State University career fair, we were approached by a student who told us she attended the WLC job shadow at our company as a high school student and she's excited to possibly have a co-op position with our company in the future."

- Shannon Webb, Corporate Communications Specialist – CIVCO Medical Solutions

"Engaging with Workplace Learning Connection provides opportunities for students to partake in mock interviews held at our school. Students prepare their resumes and practice interview questions prior to Workplace Learning Connection coming into the building to conduct the interviews. The interviews are conducted in a friendly and educational manner in hopes of enhancing the students' confidence and providing them real-world application in an interview setting. Workplace Learning Connection makes it seamless to provide these opportunities."

- Alyssa Amelon, Ag Education Teacher and FFA Adviser - Clear Creek Amana High School

JONES COUNTY

5 Schools

Anamosa Community School District

- Anamosa High School
- Anamosa Middle School

Kirkwood Jones County Regional Center

Midland Community School District

- Midland Middle/High School

Monticello Community School District

- Monticello High School

Business Hosts:

Affordable Heating and Cooling
 All Seasons Auto Body
 Alliant Energy - Anamosa
 Anamosa Chamber of Commerce
 Anamosa Dental Associates
 Anamosa Police Department
 Anamosa Raiders' Kids Club
 Anamosa State Penitentiary
 Anamosa Veterinary Clinic
 Andy's Electric
 Animal Welfare Friends
 Austin Arts Academy
 Blu Track
 Boomerang Corp
 Boondocks
 Camp Courageous
 Carlson College of Massage Therapy
 Carpenter Elementary
 Cascade Lumber Company
 Casey's Store Support Center
 Cherry Bomb Tattoo
 Citizens Savings Bank - Anamosa
 Citizens State Bank - Monticello
 Commander Buildings
 Cornerstone Building Brands
 DeWitt Veterinary Clinic
 Energy Manufacturing Company, Inc
 F and M Bank - Anamosa
 Family Veterinary Service
 Fidelity Bank and Trust - Anamosa
 Franzen Family Tractor Parts
 Great Jones County Fair
 Hardersen Cattle Company
 Iowa Corn Growers Association
 ITS - Infrastructure Technology Solutions
 JBS Foods Group
 Jones County Beef Producers
 Jones County Community Foundation
 Jones County Conservation Dept

Jones County Economic Development
 Jones County Engineers
 Jones County Family Dentistry - Anamosa
 Jones County Safe & Healthy Youth Coalition
 Jones County Sheriff's Office
 Julin Printing
 Kirkwood Community College Jones Regional
 Education Center
 Kromminga Motors - Monticello
 Lambert Reporting
 Maquoketa Valley Electric Cooperative
 Metal Design Systems Inc.
 Molly Knuth Media
 Monticello Heritage and Cultural Center
 Monticello High School
 Monticello Rotary Club
 Monticello Veterinary Clinic
 Oak Street Manufacturing
 Orbis Corporation
 Oxford Junction Ambulance
 Parks and Recreation - Monticello
 Polo Custom Products
 River Valley Cooperative - Olin
 Rogers Concrete
 Scale-Tec Ltd
 Schermans Implement
 Sedona Staffing
 Soper Plumbing, Heating and Electric, Inc.
 Studio 19
 Thou Art Gallery
 Timothy Flynn Photography
 TLC Healthcare
 Two Scoops
 UnityPoint Health - Jones Regional Medical
 Center
 USDA - Jones County
 Warren-Aswegan Real Estate Team with Keller
 Williams Legacy Group

Number of Jones County Student Participants:

TOTAL =

2,168

Jones County Student Career Exploration Experiences



1,995

Events: Mock Interviews, Financial Literacy Fairs, Speaker Days, Worksite Exploratory Events, STEAM Institute, Career Fairs, etc.



14

Internships



159

Job Shadows



"My job shadow gave me insight on what a healthcare social worker's role looks like on a day-to-day basis. I discovered how important communication is in order to be effective. I liked being able to walk around and see what people in this career do in a hospital."

- Vannessa Clapp, student - Monticello High School

"Partnering with WLC has not only been rewarding for Boomerang Corp, but holds a special place in our company's values. Boomerang is passionate about connecting the youth of our communities to the never-ending opportunities within the civil construction industry and partnering with WLC helps our leaders work towards this mission. We look forward to connecting with students every time WLC presents us with an opportunity and we can't wait to continue to work with students to gain hands-on experience and knowledge with Boomerang and the construction field."

- Paige Wendt, Marketing & Administration Supervisor - Boomerang Corp

"The students really enjoyed the hands-on activities put on by the various presenters for our career classroom speaker event organized by WLC. Their favorite activities were learning the components of soil with silly string, and trying on the different vet uniforms."

- Melissa Kane, educator - Anamosa Middle School



▶ LINN COUNTY

46 Schools

Alburnett Community School District

- Alburnett Middle/Senior High School

Cedar Rapids Community School District

- Cedar Rapids Home School Assistance
- CRCSD Transition Center
- John F. Kennedy High School
- Metro High School
- Thomas Jefferson High School
- George Washington High School
- City View
- Franklin Middle School
- Harding Middle School
- McKinley STEAM Academy
- Polk Alternative Education Center
- Roosevelt Creative Corridor Business Academy
- Taft Middle School
- Wilson Middle School

Cedar Rapids Metro Catholic Education System

- Xavier High School
- Regis Middle School

Cedar Valley Christian

Center Point-Urbana Community School District

- Center Point-Urbana High School
- Center Point-Urbana Middle School

Central City Community School District

- Central City Senior High School
- Central City Junior High School

College Community School District

- Prairie Delta Alternative High School
- Prairie High School
- Prairie Point Middle School and 9th Grade Academy
- Prairie Creek Intermediate School

Business Hosts:

Ability Physical Therapy - Mount Vernon
Abraham's Equine Clinic
Advocate Health Advisors LLC
AEGON Asset Management
Alburnett Veterinary Service
Alliant Energy
Alliant Energy - Cedar Rapids Operating
Altorfer, Inc. - Cedar Rapids
AndersoAbility Physical Therapy - Mount Vernon
Abraham's Equine Clinic
Advocate Health Advisors LLC
AEGON Asset Management
Alburnett Veterinary Service
Alliant Energy
Alliant Energy - Cedar Rapids Operating
Altorfer, Inc. - Cedar Rapids
Anderson Bogert Engineers & Surveyors
Apex Branding & Design
Arnold & Mote Wealth Management
BAE Systems
Bankers Trust
Banklowa
Basepoint Wealth
Bella Capelli
Benchmark, Inc.
Blair Ridge Dental
Blue Grass Enterprises

Isaac Newton Christian Academy

Kirkwood Linn County Regional Center

Linn-Mar Community School District

- Linn-Mar High School
- Linn-Mar Home School Assistance Program
- COMPASS Alternative Center
- Boulder Creek Intermediate
- Hazel Point Intermediate
- Excelsior Middle School
- Oak Ridge Middle School

Lisbon Community School District

- Lisbon High School
- Lisbon Middle School

Marion Independent School District

- Marion Home School Assistance Program
- Marion High School
- Vernon Middle School

Mount Vernon Community School District

- Mount Vernon High School
- Mount Vernon Middle School

North Linn Community School District

- North Linn High School
- North Linn Middle School

Springville Community School District

- Springville Secondary School

St. Joseph's Catholic School

BMO Transportation Finance
Bosch Financial (Equitable)
Boys and Girls Club of Cedar Rapids
Bricklayers & Allied Crafts - Marshalltown
Capri Cosmetology College-Cedar Rapids
Cargill, Inc.
Carrier Access IT
Catherine McAuley Center
Cedar Rapids Animal Care and Control
Cedar Rapids Bank & Trust
Cedar Rapids Civil Rights Commission
Cedar Rapids Community School District
Cedar Rapids Educational Leadership and Support Center
Cedar Rapids Electrical (JATC)
Cedar Rapids Family Dental Center PC.
Cedar Rapids Fire Department - Central (Station 1)
Cedar Rapids Freedom Festival
Cedar Rapids Pediatric Dentistry
Cedar Rapids Police Department
Cedar Rapids Public Library
Cedar Rapids/Linn County Solid Waste Agency-Marion
Cedar Valley Family Dentistry
Cedar Valley Habitat for Humanity
Cedar Valley Humane Society
Center Point Family Dentistry

Number of Linn County Student Participants:

TOTAL =

15,356

Linn County Student Career Exploration Experiences



12,790

Events: Mock Interviews, Financial Literacy Fairs, Speaker Days, Worksite Exploratory Events, STEAM Institute, Career Fairs, etc.



173

Internships



2,393

Job Shadows



Center Point-Urbana Primary School
Central Iowa Power Cooperative-CIPCO
Chains Interrupted
City of Alburnett
City of Cedar Rapids
 City Hall
 City Services Center (15th Ave)
 Public Works
 Utilities
City of Fairfax - Public Works
City of Hiawatha
Clark's Pharmacy
Climate Engineers
Coe College
Coe College - Nursing Department
Collective Financial Group
College Community School District
Collins Aerospace
Collins Aerospace Day Academy
Collins Aerospace Rec Center
Colony Plumbing, Heating and Air Conditioning
Community 1st Credit Union
Community Free Clinic
Community Savings Bank
Cornell College
CRANDIC Rail a Travero Company
Crop Tech Services Inc
CRST International, Inc.
Crystal Group
Dahm, Knapp & Associates PC
Dave Wright Nissan
de Novo Alternative Marketing
Design Engineers
Don Hummer Trucking - Cedar Rapids
Dr. David C. Gehring
Dufoe Law Firm
Dupaco Community Credit Union
Eastern Iowa Airport
Eddie's Rod & Custom
Edge Investment Solutions
Edward Jones - Marion
Eldon C. Stutsman, Inc. - Fairfax
Elevate Salon and Spa - Blairs Ferry Road
Elevate Salon and Spa - Edgewood Station
Elite Orthodontics - Edgewood
Emergent Architecture
Erskine Elementary School
ESCO Group
Farmers State Bank - Cedar Rapids Edgewood Road
Farmers State Bank - Marion
FBI - Hiawatha
Feed Iowa First
First Federal Credit Union
Five Rivers Carpenters Apprenticeship - Carpenters Training Institute
Fosters Kraus Plumbing, Heating and Air Foundation 2 - Crisis Services
Foundation 2 - Fostering Futures Program
Francis Marion Intermediate School
Freund-Vector Corporation
Frey Pet Hospital
Fuel
Glyn Mawr Winery
Graham Animal Hospital
Grant Wood AEA - Cedar Rapids
Great America Financial Services
Greenbriar Riding Academy
GreenState Credit Union - Westdale Mall
HACAP - Linn County
Hands up Communications
Harding Middle School
Hawkeye Downs
Hawkeye Publishing LLC
Hercules' Haven
Hiawatha Care Center
Hills Bank and Trust - Blairs Ferry Rd. NE
Hills Bank and Trust - Mount Vernon
Hogan - Hansen Accounting
Honkamp Krueger & CO, PC.
Hoover Elementary School - Cedar Rapids
Horizons - A Family Service Alliance - CR
HR Green, Inc.
Hudson Insurance Group
Hughes Nursery and Landscaping
IBEW/NECA - Electricians Training Center
IFP Motion Solutions Inc (formerly Iowa Fluid Power)
In Tolerance Contract Manufacturing
Independence Junior/Senior High School
Informatics, Inc.
International Brotherhood of Electrical Workers-IBEW Local 405
International Paper, Cedar River Mill
Interstate Swine, LLC.
Iowa Army National Guard - Cedar Rapids
Iowa Eyecare - Hiawatha
Iowa Laborers Education & Training Trust Fund
Iowa Operating Engineers Apprenticeship and Training
Iowa Society of CPA's
Iowa State University Extension and Outreach - Linn County
Iowa State University Extension and Outreach - Story County
IowaWORKS
Iron Workers Local 89
Junge Automotive Group - Cedar Rapids
Junior Achievement of Eastern Iowa
Kathy's Pies
Katie Milden Family Dentistry
KCKK Radio
KCRG TV-9
Keller Williams Legacy Group - Cedar Rapids
Keller Williams Midwest Partners
Kelsey Bigelow Poetry
Kepros Physical Therapy and Performance, PC - Cedar Rapids
KGAN CBS 2/KFXA FOX 28
Kirkwood Community College
 Agricultural Science
 Allied Health
 Arts and Humanities
 Athletics
 Business and Information Technology
 Center for Healthcare Simulation
 Center for Hospitality Arts
 Continuing Education & Training Services
 Corporate Training
 Dean of Students
 EagleTech
 Finance
 History
 Hospitality Arts Center for Excellence
 Human Resources
 Industrial Technologies
 Institutional Effectiveness
 K-12 Partnerships
 Linn County Regional Center
 Nursing
 One Stop/Financial Aid
 Physical Therapy Assistant
 Technology Services
La James International College - Cedar Rapids
Laborer's Local #43
LaSalle Catholic Elementary School (former St. Jude's)
LattaHarris LLP- Cedar Rapids
Ledford Engineering Co, Inc.
Legacy Manufacturing Co.
Lil' Drug Store Products, Inc
Linn Animal Hospital Marion
Linn Area Credit Union
Linn County Attorney
Linn County Conservation - Morgan Creek Park
Linn County Conservation - Wickiup Hill Outdoor Learning Center
Linn County Co-Op - Marion
Linn County Courthouse
Linn County Engineering and Secondary Road Department
Linn-Mar High School
Linn-Mar School Foundation
Lisbon - Mount Vernon Ambulance Service
Little Miss Finance
Longfellow Elementary- Marion
Lundahl, Hatt, and Austad Tax Service
Lynch Ford
M. Victoria Cole Law Firm
Marion Fire Department
Marion High School
Marion Police Department
Marion Public Library
Martin Gardner Architecture PC.
McGrath Ford
Mercy Family Counseling
Mercy Health Plaza
Mercy Medical Center
Mercy Medical Center - Outpatient Physical Therapy Clinic
Mercy Rehabilitation Services
Mercy/St. Luke's School of Radiologic Technology
Metco Credit Union
Metro Studios
Midwest Metal Products
Milestones Adult Day Health Center - Marion
Millex Complete Auto Care
Millwright Local Union 2158
Modern
Mount Mercy University
Mount Vernon Bank & Trust Company
Mount Vernon Eye Clinic
Mount Vernon Fire Department
Mount Vernon Police Department
MSI Mold Builders
Murdoch Funeral Homes & Cremation Service
Neal's Water Conditioning
Neighbor Insurance - Alburnett
New Leader Manufacturing
NewBoCo
Newell Machinery Company
Novak Elementary School
Oak Ridge Middle School
OPN Architects, Inc. - Cedar Rapids
Orchestra Iowa
P&K Midwest - Hiawatha
P&N Flight & Charter
Painters and Glaziers Local 447
Parks Schmit and Fuller Orthodontics - Edgewood
Parks Schmit and Fuller Orthodontics - Marion
Pat McGrath Buick GMC Cadillac
Pat McGrath Chevylard
Pet Health Center of Mount Vernon
Physician's Clinic of Iowa
Pirc-Tobin Construction
Plumbers and Pipefitters Local #125
Practical Farmers of Iowa
Prairie Creek Intermediate School
Prairie Early Childhood Center
Prairie Heights Elementary School
Prairie High School
Prairie Hill Elementary
Prairie Point Middle School and 9th Grade Academy
Prairie Ridge Elementary School
Prairie View Elementary School

▶ LINN COUNTY (CONTINUED)

Premier Dental
Price Industrial Electric, Inc
Principal Financial Group
Promise and Blossom
Purdue University Global- Cedar Rapids
Quaker Oats (PepsiCo)
Quality Auto Rebuilders
Raytheon Technologies
RE/MAX Concepts - Cedar Rapids
Red Star Yeast/Lesaffre
Rinderknecht
Roofers Local #182 Apprenticeship and Training Center
Roosevelt Creative Corridor Business Academy
Ross Veterinary Clinic
RSM
Ruffalo Noel Levitz
Ryan Companies
Select Physical Therapy
Sheet Metal Workers Local 263 J.A.T.C.
Shermco
Shive-Hattery Inc - Cedar Rapids
Sixth Judicial District Department of Correctional Services - Cedar Rapids
Skogman Realty - Cedar Rapids
Skogman Realty - Hiawatha
Skyworks Solutions Inc.
Softronics Ltd
Solutions Management Group (SMG)
Spinal Corrective Center, PC.
Spring Valley Dental Care
St. Joseph Catholic School

St. Matthew Catholic School
St. Pius X Catholic School
Starry Elementary School
Stewart Baxter Funeral & Memorial Services - Cedar Rapids
Strategic Financial Solutions LLC
Strellner Financial Group
Systems Unlimited Inc. - Cedar Rapids
T & C Luxury Landscape
Tanager Place
The Accel Group
The ARC of East Central Iowa
The Dash Mindset
The Design House
The District: Czech Village & New Bohemia
The Gazette Company
The Hotel at Kirkwood Center
Theatre Cedar Rapids
Thompson Truck & Trailer
Timberline Manufacturing
Titan Machinery - Center Point
TitanTV, Inc.
Transamerica
Transamerica, C ST Location
Travero/Alliant Energy
Trees Forever
Truck Country
TrueNorth Companies
Turtle Power Games
United Fire Group
United States Courthouse
United Way of East Central Iowa

UnityPoint Clinic- Express Peck's Landing
UnityPoint Health - St. Luke's Hospital
UnityPoint Health - St. Luke's Therapy Plus - Hiawatha
UnityPoint Health - St. Luke's Therapy Plus - Marion
UnityPoint Health - St. Luke's Therapy Plus - Westdale
UnityPoint Health - St. Luke's Witwer Children's Therapy Center - SW side
US Army - Cedar Rapids
US Bank - Cedar Rapids Downtown
US Navy - Cedar Rapids
Van Meter Industrial, Inc
Veridian Credit Union
Vernon Middle School
Viking Maintenance
Viola Gibson Elementary School
Volunteer
Washington Elementary - Mount Vernon
Washington High School-Cedar Rapids
Waypoint Services
Weland Clinical Laboratories
Wells Fargo Bank - 1st Ave. Cedar Rapids
West Elementary School in Independence
West Plains Engineering, Inc.
Wholistic Wellness
Wired Production Group



"Most high schoolers have no clue what they want to do after high school. While classes in high school try to help you explore future careers, most of them only go as far as having you read job descriptions on a computer. In my opinion, the only way to truly decide if a career is right is to go out and see people doing it, and that is what internships and job shadows allow you to do. Whether you get a two-year degree or a four-year degree from college, it is a major investment of time and money. Doing job shadows and internships will give you more confidence in your decision to go to school and will make you more likely to be satisfied with your chosen career field once you get out of school."

– Isaac Stark, Linn-Mar graduate and former WLC job shadow and internship student, current Kirkwood Community College Student

"We've enjoyed hosting the career exploration events that WLC has provided to us, it's a great introductory opportunity for our future workforce. These students are often coming to us very early in their career path search, and being able to have them on-site and letting them see the inter-workings of our operation is great exposure. Having the conversation with the participants about the automotive industry is exciting, these students are interested in an industry with a promising future and high employment demand. The highest value we hope to provide is a positive experience that provokes the students to peruse entering the industry and hopefully to reconnect with them when it's time to enter the workforce."

– Preston Valdez, Services Department Manager – McGrath Ford

"The students loved the WLC career day event. A student told me: 'COMPASS Career Day was eye-opening. In fact, now I am excited to pursue a health science degree. The radiologist was amazing. I wouldn't have known anything about this career without this experience.' Thank you to WLC for putting on this event."

– Danielle Patterson, Counselor – COMPASS Alternative Center

"Workplace Learning Connection has exceeded my expectations in providing opportunities for job shadows and internships for students. My son has completed three job shadows focusing on different areas of engineering and different types of companies including MSI Mold Builders, Design Engineers, Collins Aerospace, and Kirkwood's Engineering Day. Each of these experiences gave him a better idea of a day in the life of a certain position and what that might look like. The deeper dive into an internship at West Plains in Electrical and MSI Mold Builders in Mechanical has given him real-life experience and connections to truly get a feel for what it is like to be an engineer. We are beyond impressed with the process that Workplace Learning Connection goes through with regards to career assessment, interview process, and preparation for the experience. We feel incredibly grateful to have this type of resource available to our son as he explores his passion and future career. The WLC team is amazing, responsive, and demonstrates the utmost professionalism. An A+ experience in a world where that is rare."

– Ann Oleson, Parent of Xavier High School Student Quinn Oleson

WASHINGTON COUNTY

8 Schools

Highland Community School District

- Highland High School
- Highland Middle School

Kirkwood Washington County Regional Center

Mid-Prairie Community School District

- Mid-Prairie High School
- Mid-Prairie Middle School

Washington Community School District

- Washington High School
- Washington Middle School

Washington Regional Alternative Program

Business Hosts:

AllenMitchell CPAs & Consultants
 Army National Guard - Washington, Iowa
 Bazooka Farmstar, Inc.
 BJFS, LLC
 Blake Hershberger Enterprises
 Bright Futures Chiropractic
 Bulltown Repair
 CBI Bank & Trust - Washington
 Civco Medical Solutions - Kalona
 DeLong Construction
 Dental House of Washington
 DNR - Lake Darling
 Engineered Building Design
 Everence Financial Services
 Federation Bank - Washington
 Gingerich Well & Pump Service, LLC - Kalona
 Greiner Buildings Inc.
 Halcyon House
 Hills Bank & Trust - Washington
 Hills Bank & Trust - Wellman
 Hospice of Washington County
 Iowa State University Extension and Outreach –
 Washington County
 Kalona Cooperative Technology Company (KCTC)
 Kalona Family Dental
 Kalona Historical Village
 Kalona Realty

KC Hall
 Kirkwood Community College - Washington
 County Regional Center
 McCreedy Ruth Construction, LLC
 Mid-Prairie Middle School
 Mid-Prairie West Elementary School
 Open Gates Group
 Pa Beers Handyman Services
 Paws & More Animal Shelter
 Performance Therapies - Kalona
 Pharmacy on 8th
 Preppin Mama, LLC
 Riverside Casino & Golf Resort
 Riverside Fire Department
 Schlapkohl Veterinary Services
 St. James Elementary School
 State Farm Insurance - Washington
 The Daily
 The News
 United Presbyterian Home
 Washington County Conservation
 Washington County Hospital and Clinics
 Washington County Magistrate
 Washington Police Department
 Washington State Bank
 YMCA of Washington County

Number of Washington County Student Participants:

TOTAL =

1,455

Washington County Student Career Exploration Experiences



1,327

Events: Mock Interviews, Financial Literacy Fairs, Speaker Days, Worksite Exploratory Events, STEAM Institute, Career Fairs, etc.



9

Internships



119

Job Shadows



“Doing a job shadow or internship is like buying your first car. You’re able to test drive the car before you pour your time and money into something you aren’t really sure about. The cost of education is going up so you might as well check it out while it’s free. It’s also a great way to make more connections and get your name out in the community.”

– Reaghan Aggson, Mid-Prairie graduate and former WLC student – Hairitage

“Now that I have done my internship, I feel much more prepared in terms of understanding how a pharmacy works and my skill set. I also know that in doing this internship, I have another addition for my resume and applications for college, scholarships, and future jobs. Through this opportunity, I have been able to meet many people and network with people that I could utilize as a resource for recommendations. I am incredibly grateful to my hosts and WLC for their support and help in furthering my education and career search. To anyone who is on the fence about doing an internship, take the leap. It is an incredibly rewarding experience that will not only help you to explore careers but also to network and form connections with influential people.”

– Halle Hazelett, Highland High School – WLC fall 2023 intern at Pharmacy on 8th

“Workplace Learning Connection opens up the opportunity for students to learn about many different careers they can pursue post-high school. The connections and opportunities that Kirkwood opens for both the student and the employer are amazing. I appreciate the opportunities that WLC offers KCTC and we appreciate the long-standing partnership.”

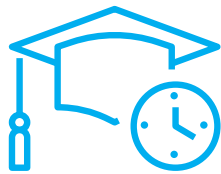
– Casey Peck, CFO/General Manager - KCTC



WORKPLACE LEARNING CONNECTION INTERNSHIP PROGRAM TRANSITIONS TO DUAL CREDIT

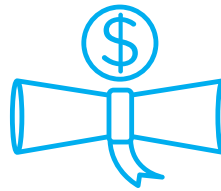
During the 2023-2024 school year, the WLC internship program was transitioned to a dual credit program, meaning high school juniors and seniors who participate in the internship program now have the opportunity to earn dual credit through Kirkwood Community College and their local high school. All internship students will now be part of a WBL-200: Practicum/Field Experience course. WBL-200 is a designated CTE course at the college and the course meets Perkins V indicators.

The course is worth one credit hour and the internship coordinator from Workplace Learning Connection serves as the course instructor. Students spend eight hours with their internship coordinator learning employability skills and reviewing their experiences, and will spend thirty-two hours on the job with the employer for a total of forty contact hours.



87

of credit hours earned



\$27,300*

Tuition Saved

*Based on the Kirkwood Community College tuition rate for school year 2023-'24.

▶ WORKPLACE LEARNING CONNECTION TEAM FY24



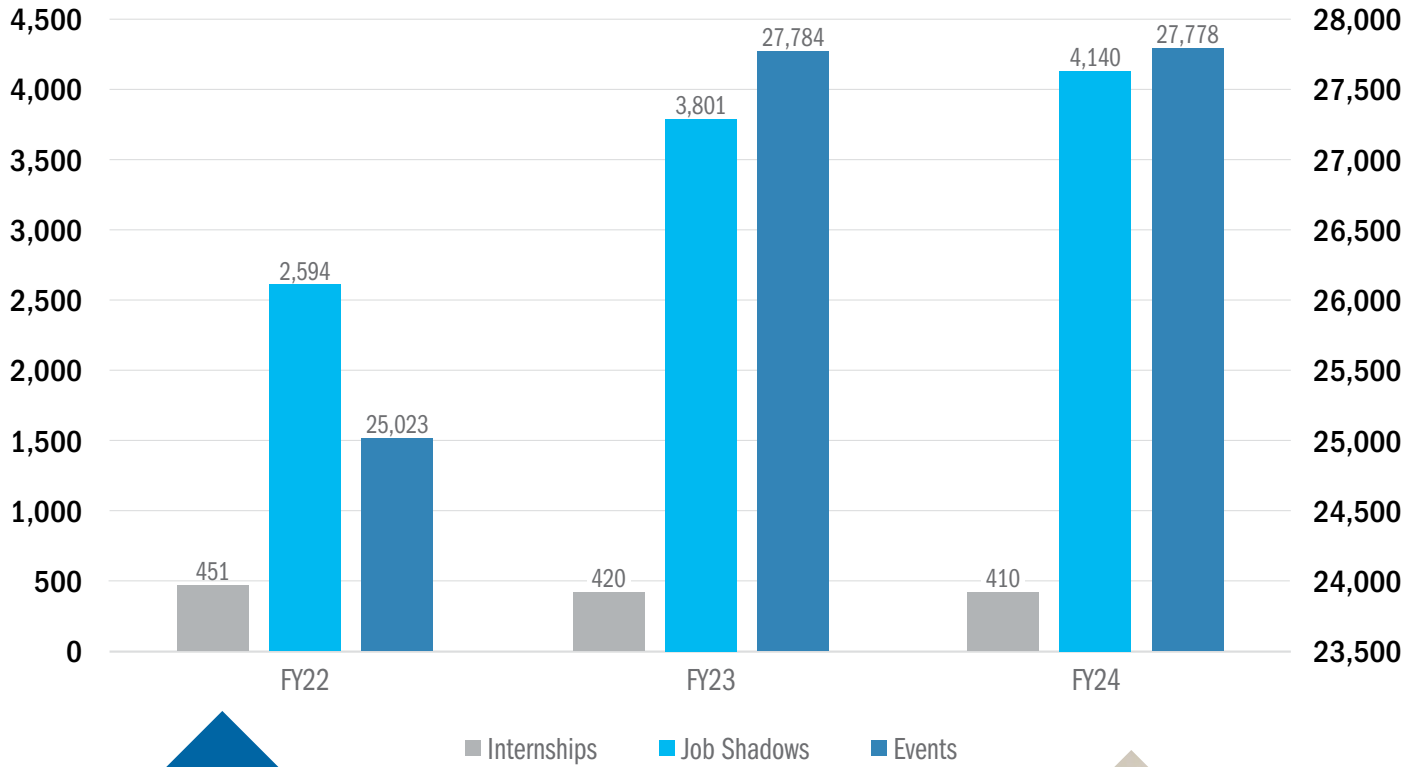
Back row (left to right): Tristan Langdon, Amanda Schwarting, Kristine Bullock, Casey Estling, Tonya Caron, Rochelle Sowers, Meghan Johnson, Ann Brendes, Cheryl Valenta

Front row (left to right): Laura Miner, Brittany Slaubaugh, Victoria Wanda, Carole Hebl, Susan Gallo

Not Pictured: Kate Ahlers, Janie Evans

CAREER EXPLORATION GROWTH

Program Growth - Last 3 Years



90%

of job shadow and internship students surveyed indicated increased awareness of local career opportunities

43%

of interns offered additional opportunities

70%

of job shadow students surveyed said their experience positively influenced their decision to live and work in Iowa



“Every event organized by Workplace Learning Connection to reach students and prepare them for the professional world has been a great experience and valuable to the students. I wish this program was around when I was a kid!”

– Jennifer Ness, County Executive Director – Iowa County USDA Farm Service Agency

PROGRAM IMPACTS



"I signed up for job shadows because I have no clue what I want to go to college for. I enjoy a plethora of different subjects, so it has been hard to decide, causing me to be very indecisive. It was ideal to go through WLC because everything was already organized and it wasn't an extra cost that I had to worry about. It gave me opportunities that I wouldn't have even thought about on my own. These job shadows provide a hands-on view of what these careers entail. We got to interact with people in the field and get a glimpse at what their life with that job was like. I think most importantly it helped me see which career fields weren't for me!"

- Mikaila Matheson, student - Washington Community High School



"My mock interview experience was very eye-opening. This was my first time interviewing and it helped me understand what interviews are like. I think it also helped prepare me for interviews I will have in the future."

- Cooper Heister, student - North Cedar Junior/Senior High School



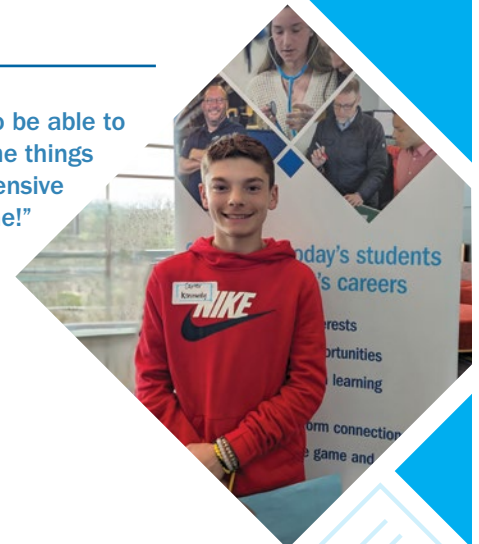
"I loved that I was welcomed by every staff member. I loved seeing what it takes to be a nurse practitioner. My most important takeaway was that I was able to make up my mind that this is something I am capable of doing and that I want to do!"

- Kayla Sykes, student at Prairie High School - WLC summer 2023 intern at UnityPoint Health - St. Luke's Hospital



"Financial Literacy Fair was a good experience. It was helpful to be able to see what it will be like after high school and college and all the things you need to think about and pay for. I was surprised how expensive things are, especially insurance and clothing, those surprised me!"

- Carter Konrardy, student - North Central Junior High School



Stay Connected With Us!

www.kirkwood.edu/wlc



Sign up for our e-newsletter!

@WorkplaceLearningConnection

Workplace Learning Connection

@workplacelearningconnection

Workplace Learning Connection - Kirkwood

